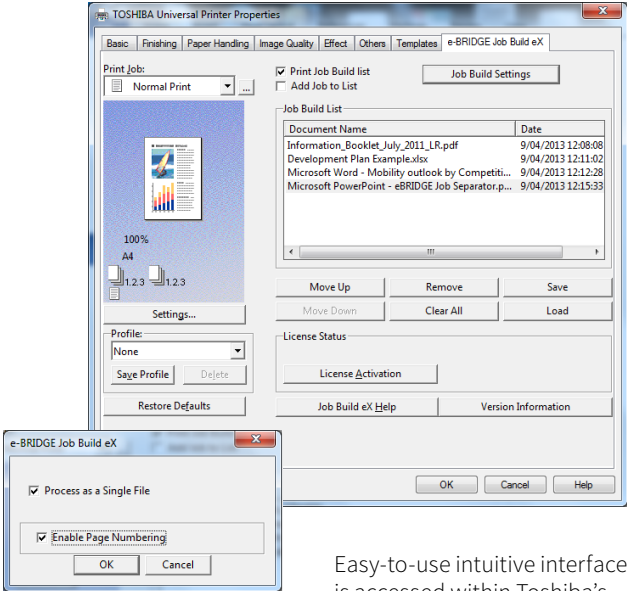


e-BRIDGE Job Build eX

- Enhance your productivity by combining various documents and their individual settings into a single print job
- Extend your flexibility by mixing paper sources, formats and output settings in one print job
- Eliminate the time consuming manual sorting and collating
- Experience the advantages of the e-BRIDGE Job
- Build eX™ features directly in Toshiba's Universal Print Driver

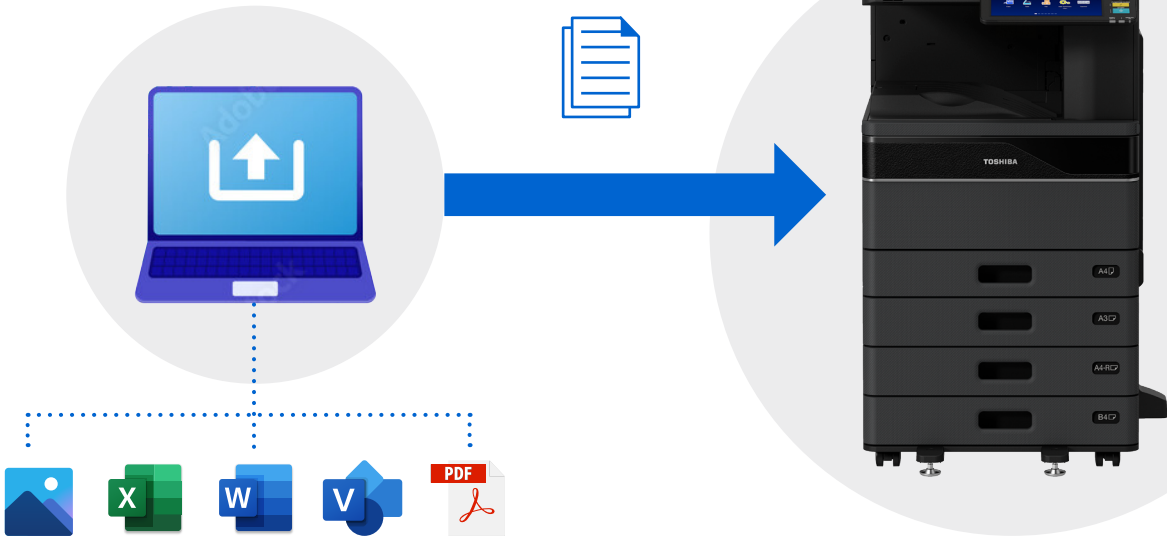


Easy-to-use intuitive interface is accessed within Toshiba's Universal Print Driver

Job Build eX

Collates document from multiple sources

Sends document as one print job



Effective documents, properly distributed for less cost

The application enables you to distribute documents more efficiently and with less expense by addressing how you create and output your documents, and present them in their final form. When coupled with Toshiba e-STUDIO devices, Toshiba's software provides the following benefits:

- Increased speed and impact of business communications
- Customised and controlled print job processing
- Improved workflow and maximised print throughput
- Flexibility of document management and output

How it works

Simply select e-BRIDGE Job Build eX™ from properties within the Toshiba Universal Print Driver. Choose the page range, paper size and source, colour or B&W output type, or simplex/duplex options as required. You can print as many documents as you like, each with its own unique print specifications.

Total Output Control

Choose the paper handling, image quality, colour mode, and finishing options individually for each source document. e-BRIDGE Job Build eX™ compiles each source document into a single print job, allowing you to produce multiple, collated sets.

e-BRIDGE Job Build eX™ is ideal for:

- **Education** – Combine all of the documents required for an assignment into a single print job and print as many collated sets as you need.
- **Government** – Group documents, publications, lists, instruction sheets and forms together to quickly print all needed documents for a specific task. Switch paper sources on-the-fly to easily print colour-coded multipart forms.
- **Religious groups** – Merge newsletters, bulletins, forms, or publications together and distribute them as pre-collated sets.
- **Associations & Organisations** – Batch print notices, meeting minutes, membership lists, etc. for distribution among chapters.
- **Finance** – Easily organize volume printing for departmental distribution switch between full colour and economical black & white within the same print job.
- **Corporate** – Create, merge, or group documents for presentations, employees, and departments.

System requirements

e-BRIDGE Job Separator eX™ works on all Toshiba MFPs featuring the Universal Printer Driver.

Licence types

Node licence

Single licence for each workstation.

Subnet licence

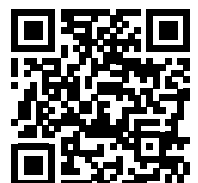
Licence can be used for up to 254 computers which have the same subnet address.

Domain licence

Licence is valid for all computers within one domain.

All company and/or product names are trademarks and/or registered trademarks of their respective manufacturers in their markets and/or countries. All rights reserved. This brochure was compiled based on information that was accurate prior to product launch. Technical data is subject to change without notice. © Toshiba Australia 2023

TAP_eBridge_JobBuild_2304



www.toshiba-business.com.au

Search for **ToshibaANZ**  